

BRAIN CHAMP OF THE YEAR
TALENT SEARCH EXAMINATION 2020-21
QUESTION BOOKLET

Questions :120

Time : 150 minutes

Score :480

INSTRUCTIONS

- OMR Answer sheet യാതൊരു കാരണവശാലും മാറ്റി നൽകുന്നതല്ല. അതുകൊണ്ട് ഉത്തരങ്ങളും മറ്റു അനുബന്ധ വിവരങ്ങളും ശ്രദ്ധയോടെ മാത്രം പൂരിപ്പിക്കുക.
- Question Booklet, OMR Answer Sheet എന്നിവ യാതൊരു കാരണവശാലും കൈമാറ്റം ചെയ്യുവാനോ മറ്റു മത്സരാർത്ഥികളുമായി യാതൊരുവിധത്തിലുള്ള ആശയവിനിമയത്തിൽ ഏർപ്പെടുവാനോ പാടുള്ളതല്ല.
- നിങ്ങൾക്ക് ലഭിച്ചിട്ടുള്ള ചോദ്യപേപ്പറിൽ 120 ചോദ്യങ്ങളുമുണ്ട് ആദ്യമേ ഉറപ്പുവരുത്തുക.
- OMR ഉത്തര പേപ്പറിൽ യാതൊരുവിധ വെട്ടി തിരുത്തലുകളോ, മറ്റു വസ്തുക്കൾ ഉപയോഗിച്ചുകൊണ്ടുള്ള മാറ്റം വരുത്തലുകളോ ഉണ്ടാകുവാൻ പാടുള്ളതല്ല.
- നീല/കറുപ്പ് പേനകൾ മാത്രം ഉത്തരങ്ങൾ രേഖപ്പെടുത്തുന്നതിന് ഉപയോഗിക്കുക. മറ്റൊരു തരത്തിലുള്ള വസ്തുക്കളും പരീക്ഷാഘാളിൽ അനുവദിക്കുന്നതല്ല.
- പരീക്ഷയുടെ നിശ്ചിത സമയത്തിനുള്ളിൽ യാതൊരു കാരണവശാലും മത്സരാർത്ഥികളെ പരീക്ഷാഘാളിന് പുറത്തേക്ക് വിടുന്നതല്ല.
- പരീക്ഷയുടെ അവസാനം OMR ഉത്തരപേപ്പർ അതത് ഇൻവിജിലേറ്ററെ സമർപ്പിച്ചുകൊണ്ട് ഉറപ്പിച്ചുപിന്തുടരേണ്ട രീതിയിൽ പരീക്ഷ ഘാളിൽ നിൽക്കേണ്ടതാണ്.
- ഇൻവിജിലേറ്ററുടെ നിർദ്ദേശം ലഭിച്ചതിനു ശേഷം മാത്രമേ ഉത്തരങ്ങൾ രേഖപ്പെടുത്തിത്തുടങ്ങുവാൻ പാടുള്ളൂ.
- ഓരോ ശരിയുത്തരത്തിനും 4 മാർക്ക് വീതം ആയിരിക്കും ലഭിക്കുക. ഓരോ തെറ്റുത്തരങ്ങൾക്കും ഒരു മാർക്ക് വീതം കുറയുകയും ചെയ്യും.
- ഒരു ചോദ്യത്തിന് ഒന്നിൽ കൂടുതൽ ഉത്തരങ്ങൾ രേഖപ്പെടുത്തിയാൽ ആ ഉത്തരം അസാധുവായി കണക്കാക്കുന്നതാണ്.
- ഏതെങ്കിലും ഘട്ടത്തിൽ എന്തെങ്കിലും സംശയങ്ങൾ ഉണ്ടായാൽ ഇൻവിജിലേറ്ററുമായി സംസാരിച്ച് വ്യക്തത വരുത്തിയതിന് ശേഷം മാത്രം മുന്നോട്ടു പോവുക.
- ഇൻവിജിലേറ്റർമാരുടെ നിർദ്ദേശങ്ങൾ കൃത്യമായി അനുസരിക്കുക.
- പരീക്ഷയുടെ സുഗമമായ നടത്തിപ്പിന് ഞങ്ങളുമായി പൂർണ്ണമായും സഹകരിക്കുക.
- പരീക്ഷക്കിടയിൽ നാം നേരിടുന്ന മഹാമാരിയെക്കുറിച്ച് മറക്കാതിരിക്കുക. വേണ്ട മുൻകരുതലുകളോട് കൂടി മാത്രം പരീക്ഷയുടെ ഓരോ ഘട്ടങ്ങളും നേരിടുക.

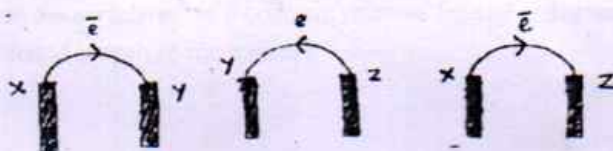
Name & Signature of Candidate	Signature of invigilator

1. On an iron box it is marked as 690W , and 230 V. Calculate the current flowing through the coil ?
 - a) 4A
 - b) 3A
 - c) 2A
 - d) 1A
2. The filament of an incandescent lamp is made of tungsten, what are the advantages of using tungsten as filament?
 - a) Low resistivity, high melting point
 - b) High resistivity, low melting point
 - c) High resistivity, zero melting point
 - d) High resistivity, high melting point
3. Which of the following sentence is false about LED lamps?
 - a) No loss of energy is the form of heat compared to other lamps
 - b) Long life Span compared to other lamps
 - c) It require huge amount of electric power
 - d) More bright light as Compared to other lamps
4. An electric heater of resistance 230 ohm is connected to 280V supply. Calculate the heat energy produced by it in one second.
 - a) 230J
 - b) 460J
 - c) 220J
 - d) 450J
5. Find out the device which works on motor principle
 - a) Transformer
 - b) Moving Coil loud speaker
 - c) Moving coil microphone
 - d) Inductor
6. Find the odd one out
 - a) Armature
 - b) Graphite brush
 - c) Voice coil
 - d) Slip ring
7. Primary of transformer has 200 turns and secondary has 300 turns. 160 V AC is applied at the primary of the transformer. What is the Voltage available at Secondary ?
 - a) 240V
 - b) 260V
 - c) 300V
 - d) 360 V
8. A transformer has 10000 turns and 240 V, 0.2 A is the primary Coil. If the Current through the Secondary coil is 0.4A. Calculate the power to the transformer.
 - a) 50W
 - b) 48W
 - c) 60w
 - d) 70w
9. As per flemings right hand rule what does the fore finger represents ?
 - a) Direction of motion of the conductor
 - b) Direction of current
 - c) Direction of magnetic field
 - d) None of these.

10. Short Circuit occurs when
- Contact between Neutral line and earth line
 - Contact between phase line and Neutral line
 - Contact phase line and earth line
 - Both B and C
11. Which of the following device works based on self induction?
- Generator
 - Inductor
 - Transformer
 - Microphone
12. If magnification is -1, then the position of image in a Concave mirror is
- At f
 - In between f and p
 - At C
 - Beyond C
13. If magnification is less than one. Then which of the following is true.
- Size of the image is equal to Size of the object
 - Size of the image is less than Size of the object
 - Size of the image is greater than size of the object
 - None of these
14. Field of view is minimum for a
- Plane mirror
 - Convex mirror
 - Concave mirror
 - Both b and c
15. An object is placed 10cm away in front of a concave mirror. Image is formed 15 cm away on the same side. Find out the focal length of the mirror?
- 6cm
 - 6cm
 - 8cm
 - 8cm
16. The volume of 1 mole of any gas at STP is ____
- 22.7 L
 - 27.4 L
 - 22.4 L
 - 24.2 L
17. Which among the following is not a possible subshell?
- 3f
 - 4f
 - 3d
 - 4d
18. Identify the metal from the following that cannot displace hydrogen from dilute acids?
- Cu
 - Ni
 - Pb
 - Mg

19. Find out the oxidation state of Mn in MnO_2 .
- +4
 - +2
 - +1
 - +6
20. Calamine is ___ Ore of Zink.
- an Oxide
 - a Sulphide
 - a Carbonate
 - None of These
21. Which among the following is the correct Mathematical representation of Charles law?
- $P/V = \text{a Constant}$
 - $V \times T = \text{a Constant}$
 - $P \times V = \text{a Constant}$
 - $V/T = \text{a Constant}$
22. Which among the following option contains the correct products those we get at Anode, Cathode, and the Solution respectively during the Electrolysis of aqueous solution of Sodium Chloride?
- Anode - Chlorine
Cathode - Sodium
Solution - NaOH
 - Anode - Chlorine
Cathode - Oxygen
Solution - HCl
 - Anode - Chlorine
Cathode - Hydrogen
Solution - NaOH
 - Anode - Sodium
Cathode - Chlorine
Solution - HCl
23. Which is the reducing agent of hematite in blast furnace?
- C
 - CO_2
 - CO
 - Electricity
24. Which group of the following solutions is used as the suitable Solutions during the Leaching of Bauxite?
- NaCl, AlCl_3
 - $\text{Al}(\text{OH})_3$, Na_3AlF_6
 - NaOH, $\text{Al}(\text{OH})_3$
 - NaOH, Na_3AlF_6
25. Which among the following equations correctly represents the Redox reaction in Cu-Ag Galvanic cell?
- $\text{Cu}^0 + \text{Ag}^+ \longrightarrow \text{Cu}^{+2} + \text{Ag}^0$
 - $\text{Cu}^0 + \text{Ag}^{+2} \longrightarrow \text{Cu}^{+2} + \text{Ag}^0$
 - $\text{Cu}^{+2} + 2\text{Ag}^{+1} \longrightarrow \text{Cu}^0 + 2\text{Ag}^0$
 - $\text{Cu}^0 + 2\text{Ag}^{+1} \longrightarrow \text{Cu}^{+2} + 2\text{Ag}^0$

26. Find out the number of moles of hydrogen atoms in 85 g NH_3 .
- 5 moles
 - 10 moles
 - 7 moles
 - 15 moles
27. Which among the following is correctly represents the short form of electronic configuration of Cr (Atomic Number= 24)
- $[\text{Kr}] 4s^2 3d^9$
 - $[\text{Ar}] 4s^1 3d^{10}$
 - $[\text{Kr}] 3d^{10} 4s^1$
 - $[\text{Ar}] 3d^{10} 4s^1$
28. What will be the molecular formula of the compound which is formed from the elements 'X' and 'Y' where 'X' belongs to 17 th group and 2 nd period and 'Y' belongs to 3 rd Period and 2 nd group of the Periodic Table.
- X_2Y
 - Y_2X
 - XY_2
 - YX_2
29. Which among the following reactions is an Endothermic reaction occur in blast furnace?
- $\text{C} + \text{O}_2 \rightarrow \text{CO}_2$
 - $\text{Fe}_2\text{O}_3 + 3\text{CO} \rightarrow 2\text{Fe} + \text{CO}_2$
 - $\text{C} + \text{CO}_2 \rightarrow 2\text{CO}$
 - $\text{CaO} + \text{SiO}_2 \rightarrow \text{CaSiO}_3$
30. The directions of electron flow in three Galvanic cells which are made up of using the Metals X, Y, Z are given.



Observe the given figures and arrange these Metals in the increasing order of their Reactivity.

- $\text{X} < \text{Y} < \text{Z}$
 - $\text{X} < \text{Z} < \text{Y}$
 - $\text{Y} < \text{Z} < \text{X}$
 - $\text{Y} < \text{X} < \text{Z}$
31. Which is the relay station of impulses in the brain ?
- Cerebellum
 - Thalamus
 - Hypothalamus
 - Cerebrum
32. Some Animals secrete certain Chemicals to their environment and Such Chemicals are known as _____
- Hormones
 - Parathormone
 - Pheromones
 - Enzymes

33. Which among the following fluids is present in between the membranous Labyrinth and bony Labyrinth of the Inner Ear ?
- Lymph
 - Perilymph
 - Endolymph
 - None of These
34. Parkinson's disease is due to the deficiency of which of the following Neurotransmitter?
- Acetyl Choline
 - CSF
 - Somatotropin
 - Dopamine
35. Normal range of calcium in our blood ?
- 9-11 mg /100 ml
 - 7- 9 mg /100 ml
 - 8- 12 mg /100 ml
 - 10-12 mg /100 ml
36. Which among the following is not a symptom of hyperthyroidism ?
- Increased body weight
 - Increased body Temperature
 - Weight loss
 - Excessive Sweating
37. Which hormone helps in the production of Breast Milk in women?
- Oxytocin
 - Prolactin
 - Vasopressin
 - Aldosterone
38. Which sex hormone helps in the Implantation of Embryo in the uterus?
- Oxytosin
 - Estrogen
 - Progesterone
 - Prolactin
39. Which among the following is a viral disease?
- Anthrax
 - Blight disease in Paddy
 - Quick Wilt in Pepper
 - None of These.
40. Hormone - Receptor complex is Formed at _____.
- Cell Wall
 - Cytoplasm
 - Cell Membrane
 - Nucleus.
41. Which among the following colours are cannot be distinguished by the people who suffering from colour blindness.
- Green, Blue
 - Green, Red
 - Red, Blue
 - All of These.

42. Which among the following hormones is not produced from the hypothalamus?

- a) Releasing Hormone
- b) Oxytocin
- c) Vasopressin
- d) Prolactin

43. Deficiency of which of these hormones causes Diabetes insipidus ?

- a) TSH
- b) ACTH
- c) ADH
- d) GTH

44. Which among the following blood cells are mainly affected by HIV ?

- a) Monocytes
- b) Neutrophils
- c) Phagocytes
- d) Lymphocytes

45. Protozoans are ____

- a) Unicellular Eukaryotes.
- b) Unicellular Prokaryotes.
- c) Multicellular Eukaryotes.
- d) Multicellular Prokaryotes.

46. No other bird is as..... as the crow.

- a) Clever
- b) More clever
- c) Cleverer
- d) Cleverest

47. The budding twigs spread out their fan,
To catch the breezy air;_

The lines consist....

- a) Blowin' in the wind
- b) Lines Written in Early Spring
- c) The Ballad of Father Gilligan
- d) Adventures in a Banyan Tree.

48. Sentences that express command, order, request are called.....

- a) Assertive sentence
- b) Imperative Sentence
- c) Interrogative Sentence
- d) Exclamatory Sentence

49. The word " flock "in the context of the poem means :

- a) A flock of sheep
- b) Sparrows
- c) Stars in the sky
- d) People in the parish

50. Tedium means :

- a) Boredom
- b) Tired
- c) Anxious
- d) Easily hurt

51. Majid Majidi is a/an..... film director.
- a) British
 - b) American
 - c) Irish
 - d) Iranian
52. The poem Lyrical Ballads is written by William Wordsworth and.....
- a) W. B. Yeats
 - b) Ruskin Bond
 - c) Satyajit Ray
 - d) S. T. Coleridge
53. If you had gone there, I.....
- a) Will come with you
 - b) Would come with you
 - c) Should come with you
 - d) Should have come with you
54. In the story, "Project Tiger " Mr. Thorat is the.....
- a) Manager
 - b) Ringmaster
 - c) Producer
 - d) Director
55. Satyajit Ray : Where is the shooting location? (Change into indirect)
- a) Satyajit Ray asked where the shooting location was.
 - b) Satyajit Ray asked where was the shooting location
 - c) Satyajit Ray asked where the shooting location is.
 - d) Satyajit Ray asked where is the shooting location
56. Have another cup of tea.....?
- a) Will you?
 - b) Have you?
 - c) Do you?
 - d) Haven't you?
57. Find the correct spelling.
- a) Resuscitation
 - b) Resascitation
 - c) Risescitation
 - d) Resescitation
58. Why was Adichie's roommate shocked?
- a) When Adichie spoke to her in standard English
 - b) When Adichie produced to her tape of Mariah Carey.
 - c) When Adichie told the story of Fide's family.
 - d) When Adichie wrote African stories.
59. The one word of " to wait somewhere secretly ".
- a) Hurl
 - b) Lurk
 - c) Sate
 - d) Wily

60. The sound was a familiar one, What was the sound?

- a) Sound of snake
- b) Sound of rabbit
- c) Sound of rats
- d) Sound of birds

61. Find the odd one out?

- a) Hardly
- b) Rarely
- c) Certainly
- d) Scarcely

62. Project tiger is written by Satyajit Ray. It is a/an.....

- a) Article
- b) Memoir
- c) Feature film
- d) Essay

63. Which figure of speech is used in the following line?

How many roads must a man walk down?

- a) Metaphor
- b) Assonance
- c) Alliteration
- d) Personification

64. I had better.....

- a) To go to school
- b) Went to hospital
- c) Give the money
- d) Visited the location

65. Find the adjective from the following sentence.

The young doctor is consulting his patients.

- a) Young
- b) Doctor
- c) Consulting
- d) Patients

66. Kurichiya Revolt was held in.....

- a) 1813
- b) 1812
- c) 1818
- d) 1809

67. Where did the naval mutiny held related to the Indian freedom struggle?

- a) Bengal
- b) Chennai
- c) Bombay
- d) Goa

68. When did the Hindustan socialist Republican Association start?
- 1928
 - 1930
 - 1927
 - 1920
69. Find the odd one out.
- Permanent land revenue settlement
 - Public education revenue settlement
 - Ryotwari system
 - Mahalwari system
70. When did the first world war start?
- 1918
 - 1923
 - 1914
 - 1913
71. Apart of the American war of independence where was the first Continental Congress held?
- Virginia
 - New Jersey
 - Philadelphia
 - Georgia
72. When did the Versailles treaty sign?
- 1914
 - 1919
 - 1917
 - 1916
73. " War is to man what maternity is to women ". Whose words are these?
- Adolf Hitler
 - Alexander Kerensky
 - Napoleon
 - Benito Mussolini
74. Find the country which is not belong to the Axis powers?
- Germany
 - American
 - Italy
 - Japan
75. Who is the first Indian shoted a British officer that provoked him to use a new catridges for the gun that introduced by the British government?
- Mangal Pandey
 - Bhagat Singh
 - Thantia Thopi
 - Rajesh Chandradath
76. The average weight of the air exert on earth's surface is..... per cm square.
- 1034mg
 - 1024mg
 - 1012mg
 - 1015mg

77. Which is not a local wind?
- Loo
 - Foehn
 - Okhi
 - Chinook
78. Name the project that implemented in India to increase the access to higher education and to improve the quality of Higher Education.
- RUSA
 - RMSA
 - SSA
 - ICDS
79. Which conventional colour has been used to represent the Barren land in topographic map?
- Red
 - Blue
 - Yellow
 - White
80. What will be the Indian time when the GMT is 6 o'clock in the evening?
- 11.30 am
 - 12.00am
 - 7.30pm
 - None of these
81. The imaginary line is drawn on maps connecting those places having equal elevation from the sea level is.....
- Contour line
 - Northings
 - Eastings
 - Indivisibility line
82. Which are the taxes that did not impose by central government?
- Corporate tax
 - Value added tax
 - Personal income tax
 - Stamp duty
- 1 & 4 are correct
 - 2 & 3 are correct
 - 2 & 4 are correct
 - 1 & 2 are correct
83. From June 21 to September 23 the apparent movement of the Sun will change from Tropic of Cancer to the Equator, at this point which season will occur in Southern hemisphere?
- Winter
 - Spring
 - Summer
 - Autumn
84. The wind that repeat at regular intervals of time and can be seasonal diurnal
- Westerlies
 - Periodic wind
 - Polar easterlies
 - Local wind

85. Expand ITCZ.
- Intertropical comparative zone
 - International troposphere convergence zone
 - International travelling controllable zone
 - Intertropical convergence zone
86. The sum of first 'n' odd natural numbers is.
- $2n^2$
 - $2n+1$
 - $2n-1$
 - n^2
87. If a, b, c are in arithmetic progression. Then $a-b/b-c$ is equal to
- 1
 - b/a
 - a/c
 - c/a
88. What will be the 'n' th term of the sequence a, a+d, a+2d,
- $a + nd$
 - $a - (n-1)d$
 - $a + (n-1)d$
 - $n + nd$
89. If $2x$, $x+10$, $3x+2$ are in an A.P. then value of 'x' will be.
- 0
 - 2
 - 4
 - 6
90. In ΔABC right angled at B, $AB = 24$ cm and $BC = 7$ cm are given, then the value of 'tan C' will be
- $12/7$
 - $4/7$
 - $20/7$
 - $7/24$
91. $(\sin 30^\circ + \cos 60^\circ) - (\sin 60^\circ + \cos 30^\circ)$ is equal to.
- 0
 - $1 + 2\sqrt{3}$
 - $1 - \sqrt{3}$
 - $1 + \sqrt{3}$
92. A box contains 20 red ink pens, 50 blue ink pens and 30 black and pens. If someone take one per randomly from the box, then what will be the probability of getting a black ink pen.
- $3/10$
 - $4/5$
 - $1/40$
 - $1/2$
93. Which among the following is not a second degree equation.
- $x^2 + 2x + 1 = 0$
 - $3x^2 + 4x = 0$
 - $3x^3 + 2x^2 + 5x + 1 = 0$
 - $5x^2 + 8x + 9 = 0$

94. Find the length of the side of a square whose area and perimeter are numerically equal.
- 4
 - 2
 - 1
 - 5
95. The sum of a number and its square is 10 times of that number. Then its mathematical equation is.
- $x^2+9x=0$
 - $x^2-9x=0$
 - $9x^2-9x=0$
 - $5x^2+2x=0$
96. How many total two digit natural numbers are there .
- 100
 - 90
 - 89
 - 99
97. What is the value of $\sin 30^\circ$.
- $1/2$
 - $\sqrt{3}/2$
 - 1
 - $2/\sqrt{3}$
98. Find the Y co-ordinate of any point on X axis.
- 0
 - 1
 - 2
 - None of these
99. Co-ordinate of origin
- (0, 0)
 - (1, 0)
 - (2, 0)
 - (10, 0)
100. If the angles of a triangle are in the ratio 30 : 60 : 90. Then what will be the ratio of the sides of that triangle.
- $1 : \sqrt{3} : 2$
 - $1 : 1 : \sqrt{2}$
 - $1 : \sqrt{2} : \sqrt{3}$
 - $1 : 2 : 3$
101. Angle in a semi circle.
- 0°
 - 90°
 - 180°
 - 100°
102. Sum of the angles made by an Arc and its alternate arc is
- 90°
 - 180°
 - 30°
 - 60°

103. Which of the given number will be a term of the arithmetic sequence 22, 26, 30,
- 48
 - 50
 - 52
 - 55
104. Which among the following is the smallest 3 digit number which is a multiple of 6.
- 100
 - 104
 - 102
 - 106
105. Consider the multiples of 7 in between 100 and 500 and select the correct pair from the following which contain the first and last numbers among that multiples.
- 102, 494
 - 103, 495
 - 104, 496
 - 105, 497
106. ഏത് ഭാഷയിൽ നിന്നാണ് കൊറോണ എന്ന പദം ഉത്ഭവിച്ചത്?
- ലാറ്റിൻ
 - ഇംഗ്ലീഷ്
 - ഗ്രീക്ക്
 - ചൈനീസ്
107. കേരളത്തിൽ രണ്ടാമതായി കൊറോണ വൈറസ് സ്ഥിരീകരിച്ച ജില്ല?
- തൃശ്ശൂർ
 - തിരുവനന്തപുരം
 - പത്തനംതിട്ട
 - ആലപ്പുഴ
108. കൊവിഡ്-19 വ്യാപനം തടയുന്നതിനായി ആദ്യമായി സമ്പൂർണ്ണ ലോക്ഡൗൺ ഏർപ്പെടുത്തിയ സംസ്ഥാനം?
- രാജസ്ഥാൻ
 - കേരളം
 - കർണാടക
 - ആന്ധ്ര പ്രദേശ്
109. കോവിഡ്-19 നെ കുറിച്ചുള്ള വിവരങ്ങൾ ജനങ്ങളിലേക്ക് എത്തിക്കുന്നതിനായി കേരള സർക്കാർ ആരംഭിച്ച ടോൾ ഫ്രീ നമ്പർ?
- 1065
 - 1075
 - 1056
 - 1057
110. കോവിഡ്-19 ബോധവൽക്കരണത്തിനായി റോബോട്ടുകളെ ഉപയോഗിച്ച ആദ്യ സംസ്ഥാനം?
- കേരളം
 - ഹരിയാന
 - തമിഴ്നാട്
 - മധ്യപ്രദേശ്

111. कोन ब्रह्मश्रोम से लोहा ले सकता हूँ
- a) महारथी
 - b) टूटा पहिया
 - c) रथ
 - d) दुस्साहसी
112. किसी के लिए १ में निहित सर्वनाम कोन सा है
- a) कोन
 - b) यह
 - c) वह
 - d) कोइ
113. कोन सा विशेषण बीरबहूटी का नहीं है
- a) गदबदी
 - b) सुर्ख
 - c) बैगनी
 - d) मुलायम
114. अकाल के बाद घर के ऊपर धुँआ.....
- a) उठा
 - a) उठे
 - b) उठी
 - c) उठी
115. कोन सा प्रस्ताव सही है
- a) कुतिया पेड़. पौधोके पास सो रही है
 - b) कुतिया बच्चे.बच्चे के पास सो रही है ।
 - c) कुतिया चूल्हे चक्की के पास सो रही है ।
 - d) कुतिया माम . बाप के पास सो रही है ।
116. जोखू ने पानी नहीं पिया क्योंकि
- a) पानी गरम था
 - b) पानी ठंडा था
 - c) पानी खरा था
 - d) पानी खराब था

117. अकाल ओर उसके ए बाद कवि कोन है

- a) प्रेमचन्द्र
- b) सुमित्रनन्दन पन्त
- c) नागार्जुन
- d) प्रभाव

118. बीरबहूटी किस विधा की रचना है

- a) कहानी
- b) लेख
- c) निबन्ध
- d) कविता

119. सही समानार्थी शब्द लिखे

- a) शिकस्त . हालात
- b) हालात . पराचय
- c) भीत . पछ
- d) उदास . दुख

120. राष्ट्रीय हिंदी दिवस कब मनाया जाता है

- a) जनवरी 10
- b) अक्टूबर 2
- c) सितम्बर 14
- d) मार्च 8