

Class 10

**BAS**

A

EM

Brain Annual Scholar

2023-24

**Question Booklet**

Total number of questions: 120

Maximum Score: 480

Maximum Time: 2½ Hrs

**നിർദ്ദേശങ്ങൾ:**

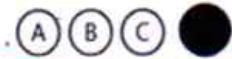
1. ആദ്യത്തെ അര മണിക്കൂർ സമാശ്വാസ സമയമാണ്. ഈ സമയം ഇൻവിജിലേറ്റേഴ്സ് തരുന്ന നിർദ്ദേശങ്ങൾ കൃത്യമായി ശ്രദ്ധിക്കുകയും പരീക്ഷക്ക് ആത്മവിശ്വാസത്തോടെ തയ്യാറെടുക്കുകയും ചെയ്യുക.
2. പരീക്ഷ ആരംഭിക്കുന്നതിനുള്ള ബെല്ലടിച്ചതിനു ശേഷം മാത്രം ചോദ്യ പുസ്തകത്തിലെ സീൽ പൊട്ടിക്കുക.
3. തന്നിട്ടുള്ള ചോദ്യ പുസ്തകത്തിൽ 120 ചോദ്യങ്ങൾ ഉണ്ടെന്നും, ചോദ്യ പുസ്തകത്തിലെയും ഹാൾടിക്കറ്റിലെയും കോഡ് ഒന്ന് തന്നെയെന്നും ഉറപ്പ് വരുത്തുക.
4. പരീക്ഷ ആരംഭിക്കുന്നതിനു മുമ്പ് OMR ഷീറ്റിലെയും ചോദ്യ പുസ്തകത്തിലെയും നിർദ്ദിഷ്ട കോളങ്ങൾ പൂരിപ്പിച്ചെന്ന് ഉറപ്പുവരുത്തുക.
5. ഓരോ ശരിയുത്തരത്തിനും നാലു മാർക്ക് വീതം ലഭിക്കുകയും ഓരോ തെറ്റുത്തരത്തിനും ഒരു മാർക്ക് വീതം കുറയുകയും ചെയ്യും.
6. പരീക്ഷാ സമയം തീർന്നതിനു ശേഷം മാത്രമേ പരീക്ഷ ഹാൾ വിടാൻ പാടുള്ളൂ.
7. മാനുവലായ തരത്തിലുള്ള പെരുമാറ്റ രീതികൾ പരീക്ഷാഹാളിൽ അനുവദിക്കുന്നതല്ല. ഇത്തരത്തിലുള്ള ഏതെങ്കിലും പ്രവർത്തികൾ ശ്രദ്ധയിൽപ്പെട്ടാൽ ഉടനെ തന്നെ പരീക്ഷ എഴുതാനുള്ള അവസരം നഷ്ടപ്പെടുന്നതായിരിക്കും.
8. സംശയനിവാരണത്തിന് ഇൻവിജിലേറ്റേഴ്സുമായി ബന്ധപ്പെടുക.
9. യാതൊരു വിധ പേടിയും ആവലാതികളുമില്ലാതെ തന്നെ പരീക്ഷ എഴുതുക. **BAS**  
നിങ്ങൾക്ക് നല്ലൊരു അനുഭവവും വിലയിരുത്തലുമാവട്ടെ.

**10. INSTRUCTIONS FOR FILLING:**

തെറ്റായ രീതി



ശരിയായ രീതി



Name of candidate:

Register Number:

Name and signature of invigilator:

***'Do your best. We're eager to meet the Brain Annual Scholar.'*****ALL THE BEST****SEAL**

- 2



16. Which of the following is not the form of 'be'?
- a) am/is                      b) has/have                      c) was/were                      d) be/been
17. Ask him \_\_\_\_\_.
- a) whether he had did it                      b) whether he has done it  
c) whether he done it                      d) whether he had done it
18. The meaning of the word 'abundance.'
- a) an attendant                      b) in large quantity  
c) having been deserted or left                      d) a small musical instrument
19. I'd love to buy a Porsche, but they cost **an arm and a leg**. Find out the meaning of the idiom.
- a) excessively high price                      b) delighted  
c) saying something will never happen                      d) rapidly
20. '**In the light of the lamp I sat there like a stone image in flesh.**' Identify the context.
- a) when the snake coiled around his arm                      b) when he looked into the mirror  
c) when the thief left his dirty vest behind                      d) when he made earthshaking decisions

### HISTORY

21. Who said '**I am the state**'?
- a) Louis XIV                      b) Louis XVI                      c) Louis XV                      d) Louis XVII
22. '**The Brown Shirts**' is related with:
- a) Mussolini                      b) Roosevelt                      c) Hitler                      d) Mao Zedong
23. The Central Vigilance Commission came into effect in \_\_\_\_\_.
- a) 1946                      b) 1961                      c) 1964                      d) 1969
24. '**Swadeshi Steam Navigation**' was started by:
- a) APJ Abdulkalam                      b) KM Panikkar                      c) VP Menon                      d) Chidambaram Pillai
25. '**Nildarpan**' was authored by \_\_\_\_\_.
- a) Dinabandhu Mithra                      b) Amrithashegil                      c) Tagore                      d) Gandhi
26. Who is known as the '**Frontier Gandhi**'?
- a) Nehru                      b) Pattel                      c) Khan Abdul Gaffarkhan                      d) B G Thilak
27. ISRO formed in the year of \_\_\_\_\_.
- a) 1963                      b) 1968                      c) 1961                      d) 1969
28. Basel Evangelical Mission was the first missionary organisation in?
- a) Kochi                      b) Travancore                      c) Malabar                      d) Calicut
29. Father of Political Science:
- a) Aristotle                      b) Plato                      c) Russoe                      d) Auguste Comte
30. Quit India Movement is in the year of \_\_\_\_\_.
- a) 1941                      b) 1942                      c) 1943                      d) 1944

## GEOGRAPHY

31. Which of the following line of longitude is known as prime meridian?  
a) International date line                      b) Equator  
c) Greenwich line                                d) Tropic of Cancer
32. Which is the local wind blowing Eastern Slopes of Rocky Mountain?  
a) Loo    b) Chinook                                      c) Cyclones                                      d) Westerlies
33. Which agency is Entrusted for preparing topographic Maps in India?  
a) GST committee                                b) Samagra siksha abhiyan  
c) Cesus Commissioner                        d) Survey of India
34. Who is the Chairman of GST Council..?  
a) Union finance minister                      b) Prime Minister  
c) President                                        d) Governor
35. Which color used to depict Grid lines on topographic Map?  
a) Brown    b) Red    c) Black    d) Blue
36. Which one is the longest peninsular river in the following?  
a) Ganga    b) Indus    c) Krishna    d) Godavari
37. Which of the following Season is related with "Western Disturbance"?  
a) Summer    b) Winter    c) Spring    d) Autumn
38. Which crop is known as "Universal Fibre"?  
a) Cotton    b) Jute    c) Sugarcane    d) Wheat
39. In which year that the Reserve Bank of India established?  
a) 2017    b) 1853    c) 1935    d) 1951
40. Which one of the following is known as "Granary of India"?  
a) Northern plain    b) Peninsular Plateau  
c) Northern Mountains    d) Eastern Mountains

## MATHEMATICS

41. How many natural numbers are there from 1 to 200 which are divisible by 7?  
a) 27    b) 28    c) 29    d) 30
42. Find the sum of first 100 natural numbers  
a) 5050    b) 5051    c) 5005    d) 5250
43. There are 7 green beads and 7 red beads in a box. What is the probability of getting a red bead from the box without looking in to it?  
a)  $\frac{1}{14}$     b)  $\frac{2}{14}$     c)  $\frac{1}{2}$     d)  $\frac{14}{14}$
44. 1 added to the product of two consecutive odd numbers gives 324, what are the numbers?  
a) 17, 19    b) 19, 21    c) 15, 17    d) 13, 15



45. One angle of a quadrilateral with all its vertices on a circle is  $60^\circ$ , what is the angle opposite to this angle?  
 a)  $60^\circ$                       b)  $120^\circ$                       c)  $30^\circ$                       d) None of these
46. A boy standing on a side of a river sees the top of a tree on the other side with an angle of elevation  $60^\circ$ . Stepping 20 m back he sees the same tree with an angle of elevation  $30^\circ$ . Find the width of the river?  
 a) 10 m                      b) 20 m                      c) 5 m                      d)  $5\sqrt{3}$  m
47. (1, 2) (4, 6) are the opposite vertices of a rectangle. Find the other two vertices  
 a) (1, 6) (2, 4)                      b) (1, 6) (4, 2)  
 c) (4, 2) (6, 1)                      d) None of these
48. What is the angle between radius and tangent on a point on the circle?  
 a)  $180^\circ$                       b)  $45^\circ$                       c)  $90^\circ$                       d)  $30^\circ$
49. What is the slope of the line joining the points (1,2) and (5,6)?  
 a)  $\frac{1}{4}$                       b)  $\frac{1}{2}$                       c) 1                      d) None of these
50. Write  $P(x) = x^2 + 4x + 3$  as the product of two first degree polynomials  
 a)  $(x+1)(x-3)$                       b)  $(x+1)(x+3)$   
 c)  $(x-1)(x-3)$                       d)  $(x-1)(x+3)$
51. Find the median of the numbers 26, 23, 22, 21, 24, 26, 21, 25.  
 a) 23                      b) 24                      c) 23.5                      d) 24.5
52. Sum to n terms of an arithmetic sequence is  $n^2 + 3n$ . What is the sum of first 20 terms?  
 a) 130                      b) 460                      c) 260                      d) 430
53. Numbers from 1 to 20 are written on paper slips and put in a box. What is the probability of taking a prime number without looking into the box?  
 a)  $\frac{1}{5}$                       b)  $\frac{2}{5}$                       c)  $\frac{3}{5}$                       d)  $\frac{4}{5}$
54. What number added to  $x^2 + 4x$  to become a perfect square?  
 a) 1                      b) 2                      c) 3                      d) 4
55. A circle with Centre as origin passes through the point (3, 4). Find the coordinates of the point at which the circle meets x-axis.  
 a) (3, 0)                      b) (5, 0)                      c) (0, 4)                      d) (0, 5)
56. Find the equation of the line passing through the point (1, 1) and (2, 2).  
 a)  $x-y=0$                       b)  $x+y=0$                       c)  $2x+y=1$                       d) None of these
57. The area of a triangle is  $24 \text{ cm}^2$  and its perimeter is 12 cm. What is the radius of its incircle?  
 a) 1 cm                      b) 2 cm                      c) 4 cm                      d) 8 cm
58. The base edge of a square pyramid is 10 cm and its slant height is 13 cm. What is its volume in  $\text{cm}^3$ ?  
 a) 1200                      b) 600                      c) 400                      d) 150

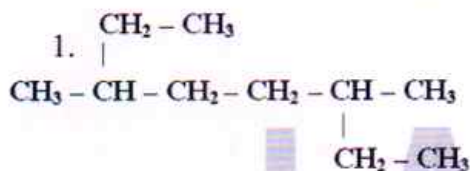
59. The radii of spheres are in the ratio 2:3. What is the ratio of their volumes?  
 a) 4:6                      b) 4:9                      c) 8:9                      d) 8:27
60. The lines AB and CD are mutually perpendicular. Slope of AB is 4. Find the slope of CD.  
 a) -4                      b)  $\frac{1}{4}$                       c)  $-\frac{1}{4}$                       d) 4

### CHEMISTRY

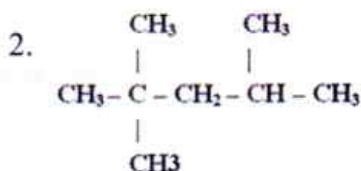
61. Which of the following does not move towards Cathode?  
 a) Sodium ion                      b) Hydronium ion                      c) Chloride ion                      d) Both A & B
62. The Lowest Temperature, Reducing agent of Haematite & Flux of  $\text{SiO}_2$  used in the Blast Furnace are respectively.....  
 a) 1070K,  $\text{CO}_2$  & CaO    b) 1090K, CaO & CO    c) 1090K, CO &  $\text{FeSiO}_3$     d) 1070K, CO & CaO
63. Select the Correct Statements from the following.  
 1. Collision between the Gas molecules exerts the pressure of a gas.  
 2. Measure of Average Kinetic Energy is called the Temperature.  
 3. Mass of  $6.022 \times 10^{23}$  molecules of Oxygen gas is 16 g.  
 4. Molten iron is less Denser than molten Slag.  
 a) 2 & 4 only                      b) 2 only                      c) 1, 2 & 3 only                      d) 3 only
64. Find the Volume of 85g  $\text{NH}_3$  at STP.  
 a) 22.4 L                      b) 224 L                      c) 112 L                      d) 44.8 L
65. An air filled balloon kept under sunlight, hence it inflated and burst. It is an Example for which of the following gas law? Also Select its correct mathematical expression.  
 a) Charles Law,  $V \times T = \text{a constant}$                       b) Boyles Law,  $P \times V = \text{a constant}$   
 c) Boyles Law,  $P/V = \text{a constant}$                       d) Charles Law,  $V/T = \text{a constant}$
66. Short form of Subshell electronic Configuration of Cu (atomic Number= 29) is...  
 a)  $[\text{Ar}] 4s^2 3d^9$                       b)  $[\text{Ne}] 3d^{10} 4s^2$   
 c)  $[\text{Ne}] 4s^1 3d^{10}$                       d)  $[\text{Ar}] 3d^{10} 4s^1$
67. Select the Correct option from the following.  
 1. Butanol and Ethoxyethane are Functional isomers.  
 2. Uranium is used as a fuel in nuclear reactors.  
 3. During Electroplating The metal which is used to coat on the other metal is used as the Anode and connects on the -ve terminal of Battery.  
 4. Benzene is an aromatic compound with molecular formula  $\text{C}_6\text{H}_6$ .  
 5. Cadmium is refined by means of Liquation.  
 6. The d block metals in the compounds of transition elements are responsible for the colours of the compounds.  
 a) 1, 2 & 3 are correct                      b) 3, 4 & 5 are correct  
 c) 1, 2 & 4 are incorrect                      d) 3, 5 & 6 are Incorrect
68. The enzyme/s present in yeast is/ are ...  
 1. Invertase                      2. Sucrase                      3. Maltase                      4. Zymase  
 a) 4 only                      b) Both 2 & 4                      c) Both 2 & 3                      d) Both 1 & 4



69. Select the correctly named Compounds from the following.



2, 5-Diethylhexane



2, 4, 4-Trimethylpentane

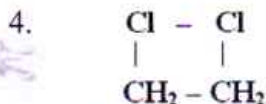
3.



Ethoxymethane



Butene



1, 2-Dichloroethane

a) 3 & 5 only

b) 4 & 5 only

c) 1, 3 & 5 only

d) 2, 4 & 5 only

70. Find out the odd one.

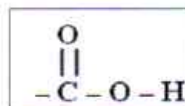
a) Temperature

b) Pressure

c) Catalyst

d) Concentration

71. Compounds containing this functional group are called.



a) Esters

b) Carboxylic acids

c) Ethers

d) None of these

72. The outermost Subshell of Noble gases except He Contain ----- number of electrons.

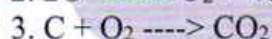
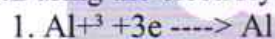
a) 6

b) 10

c) 8

d) 18

73. During the electrolysis of Alumina which of the following reaction/s taking place on Anode.



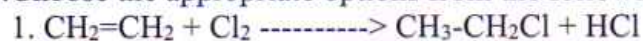
a) 1 & 2

b) 2 & 3

c) 2 Only

d) 2 & 4

74. Choose the appropriate options from the following by analysing the given data.



2. Ethanol is called Grape Spirit



4. Most of the detergents are Salts of Sulphuric Acid

5.  $\text{V}_2\text{O}_5$  is used as the catalyst in Contact Process

6. Esters are formed from Alcohols and Ethers.

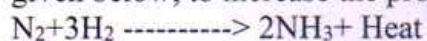
a) 1, 2 & 5 are Correct

b) 2, 4 & 5 are Correct

c) 2, 3 & 5 are Correct

d) 2, 5 & 6 are Correct

75. What changes should make on the Temperature and Pressure on the equilibrium of the reaction given below, to increase the production of Ammonia.



a) Increase both T & P

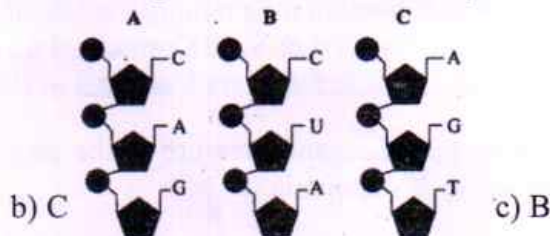
b) Decrease both T & P

c) Increase P & Decrease T

d) Decrease P & Increase T

## BIOLOGY

76. In spinal cord
- white matter outside and grey matter inside
  - white matter on both sides
  - grey matter on both sides
  - white matter inside and grey matter outside
77. Read the statements given below.
- The part where myelinated neurons are present in abundance is called white matter.
  - Nerves are groups of dendrites covered by connective tissue.
- 1 and 2 are Correct
  - 1 and 2 are Incorrect
  - 1 Incorrect and 2 Incorrect
  - 1 Correct and 2 Incorrect
78. Oleogustus is the taste of.....
- Meat
  - Umami
  - Lipid
  - Milk
79. The hormone in gaseous form
- Auxin
  - Ethylene
  - Gibberellins
  - Cytokinin
80. Analyse the statements.
- Filariasis is spread by culex mosquitoes.
  - Diphtheria is a bacterial disease.
- 1 correct and 2 incorrect
  - 1 incorrect and 2 correct
  - 1 and 2 are incorrect
  - 1 and 2 are correct
81. The white blood cell that stimulates other white blood cells
- Neutrophil
  - Basophil
  - Eosinophil
  - Monocyte
82. Most primitive member of human race.
- Ardipithecus ramidus
  - Homo habilis
  - Homo erectus
  - Homo sapiens
83. Some situations that helped in the origin of life existed in primitive earth. Select the correct situations from the following.
- There was no water in primitive earth.
  - There was no free oxygen in primitive earth.
  - There were no gases in primitive earth.
  - There was availability of energy in primitive earth.
- 1 and 2
  - 2 and 3
  - 2 and 4
  - Above all
84. Observe the nucleotide strands given below and Identify the strand that is found in DNA only.



- a) A                      b) C                      c) B                      d) A and C
85. BCG vaccine is used against ...
- AIDS
  - Tuberculosis
  - Dengue fever
  - Malaria



**Directions:** In the following 5 questions, a statement of assertion is followed by a statement of reason.

Mark the correct choice as:

- (a) If both Assertion and Reasons are true and Reason is the correct explanation of Assertion.
- (b) If both Assertion and Reasons are true but reason is not the correct explanation of Assertion
- (c) Assertion is False but Reason is True.
- (d) Both Assertion and Reason are false.

86. Assertion: Vasopressin is also known as Anti Diuretic hormone (ADH).

Reason: Vasopressin can increase the renal re-absorption of water.

87. Assertion: Failure of secretion of somatotropin during growth phase causes acromegaly

Reason: Somatotropin hormone stimulates the body growth and elongation of long bones.

88. Assertion: White blood cells are the soldiers of defence of our body.

Reason: Neutrophil, basophil, eosinophil and monocyte acts as a part of a non-specific defence system and lymphocytes are part of specific defence.

89. Assertion: The sex of a child is determined by mother's chromosomes.

Reason: Humans has two types of sex chromosomes xx and xy.

90. Assertion: Haemophilia is not a genetic disease

Reason: Genetic diseases are transmitted through vectors

### PHYSICS

91. A convex lens has a focal length of 12cm. an object is situated at a point 48 cm from the lens. Is the size of the image greater or lesser than that of the object?

- a) Lesser
- b) Greater
- c) Same
- d) None of these

92. Choose the correct statement from the following:

- a) Reason behind hypermetropia is larger the size of eye ball
- b) Reason behind hypermetropia is smaller the size of eye ball
- c) Reason behind hypermetropia is decreased focal length
- d) Reason behind hypermetropia is high power of lens

93. Two bulbs of 50 w and 450 w first connected in series and then in parallel. Which bulb gives more light?

- a) 21.4w, 60w bulb
- b) 21.4w, 40w bulb
- c) 22.4w, 200w bulb
- d) 22.4w, 200w bulb

94. 1 Kwh is equal to. . .

- a)  $3.6 \times 10^6$  MJ
- b)  $3.6 \times 10^5$  MJ
- c)  $3.6 \times 10^2$  MJ
- d) 3.6 MJ

95. Biogas is formed in the . . .

- a) Presence of air only
- b) Presence of water only
- c) Absence of air only
- d) Presence of water absence of air

96. A person cannot see objects kept beyond 2 m distinctly. This defect can be corrected by using the lens of power \_\_\_\_\_.

- a) +0.5D
- b) -0.5D
- c) +0.2D
- d) -0.2D

97. Magnetic field lines around a straight conductor forms a pattern of \_\_\_\_\_.  
 a) Concentric circles b) Concentric ellipse  
 c) Straight line d) Square shape
98. Whatever the distance from the mirror to the object, erect image is formed on \_\_\_\_\_.  
 1) Plane mirror 2) Concave mirror 3) Convex mirror  
 a) 1, 2 & 3 b) 1 Only c) 1 & 2 d) 1 & 3
99. Where is Tarapur power station located?  
 a) Madhya Pradesh b) Uttar Pradesh  
 c) Maharashtra d) Tamil Nadu
100. Which mirror has the maximum field of view?  
 a) Concave b) Convex c) Plane mirror d) Both a and b
101. Which of the following factors will increase the magnetism of a solenoid?  
 1. Increase the intensity of current.  
 2. Reduce the number of turns in the coil.  
 3. Use iron as Core.  
 4. Reduce the surface area of core.  
 a) 1 & 3 b) 1 & 2 c) 2 & 4 d) 2 & 3
102. AP transformer working on 240V AC supplies a voltage of 8 volt do an electric bell in the circuit the number of turns in the primary coil is 4800. Calculate the number of turns in the secondary coil.  
 a) 162 b) 180 c) 160 d) 150
103. Energy conversion that take place in the microphone.  
 a) Electric energy -> Sound energy b) Mechanical energy -> Electrical energy  
 c) Sound energy -> Electric energy d) Mechanical energy -> Sound energy
104. Which of the following should be connected in parallel to a device in a circuit?  
 a) Volt meter b) Ammeter c) Galvano meter d) None of these
105. What are the phenomenon that cause the rainbow?  
 1) Refraction 2) Total internal reflection 3) Dispersion  
 a) 2 b) 1 & 2 c) 2 & 3 d) 1, 2 & 3

### MENTAL ABILITY & G.K.

106. ഫോട്ടോ ചൂണ്ടിക്കാണിച്ച് കാവ്യ പറഞ്ഞു ഇവനെന്റെ അച്ഛന്റെ ഒരേയൊരു മകന്റെ മകനാണ് എങ്കിൽ കാവ്യ അവന്റെ ആരാണു?  
 a) സഹോദരി b) അമ്മായി c) അമ്മ d) ഇവരാരുമല്ല
107. ഹാഷിഫ് 200 മീറ്റർ മുന്നോട്ട് സഞ്ചരിച്ചതിനുശേഷം ഇടത്തോട്ട് തിരിഞ്ഞ് 100 മീറ്റർ സഞ്ചരിക്കുന്നു. വീണ്ടും ഇടത്തോട്ട് തിരിഞ്ഞ് 200 മീറ്റർ സഞ്ചരിക്കുന്നു. എങ്കിൽ തുടങ്ങിയ സ്ഥലത്തുനിന്ന് ഹാഷിഫ് ഇപ്പോൾ എത്ര ദൂരത്തിലാണ്?  
 a) 200 m b) 300 m c) 100 m d) 500 m



108. ഒരു കോഡ് ഭാഷയിൽ ROSE എന്നതിനെ SPTF എന്നും FLOWER എന്നതിനെ GMPXFS എന്നും എഴുതിയാൽ BRAIN എന്നതിനെ എങ്ങനെ എഴുതാം?

- a) CSBJO      b) CSJBO      c) BCSJO      d) CBJOS

109. 3, 9, 21, 45, \_\_\_\_\_

- a) 90      b) 57      c) 72      d) 93

110. ഇന്ത്യയുടെ നിലവിലെ രാഷ്ട്രപതി ആര്?

- a) നരേന്ദ്രമോദി      b) രാമനാഥ് കോവിന്ദ്      c) ഭരപതി മുര്മു      d) പ്രതിഭ പാട്ടീൽ

### HINDI

111. 'मुझे' में निहित सर्वनाम कौन सा है?

- a) मैं + को      b) मैं+के      c) मैं+की      d) मैं+का

112. 'हताशा से एक व्यक्ति बैठ गया था' कविता का संदेश क्या है

- a) दो मनुष्यों के बीच मानवीय संवेदना होना है      b) दो मनुष्यों के बीच जानकारी होना है  
c) दो मनुष्यों के बीच हताशा होना है      d) दो मनुष्यों के बीच में दर्द होना है

113. 'नीरायुद्ध' शब्द का समानार्थी शब्द कौन सा है?

- a) ब्रह्मास्त्र      b) महारथी      c) निहत्थी      d) पहिया

114. कौन ब्रह्मास्त्रों से लोहा ले सकता हूँ?

- a) महारथी      b) अभिमन्यु      c) दूता पहिया      d) रथ

115. 'तारीफ करने' का तात्पर्य है?

- a) पुलकित करना      b) प्रशंसा करना      c) तालियां बजाना      d) परिवर्तित करना

116. सही वाक्य चुनकर लिखिए।

- a) लोग तालियां बजाने लगे      b) लोग तालियां बजाने लगी      c) लोग तालियां बजाने लगा      d) लोग तालियां बजाने लगीं

117. सही प्रस्ताव चुनकर लिखिए।

- a) अकाल के बाद घर में लोग परेशान होने लगा।      b) अकाल के बाद घर में झगड़ा होने लगा।  
c) अकाल के बाद घरवाले दुखी होने लगा।      d) अकाल के बाद घर में खाना पकाने लगा।

118. 'कवि के समान' अर्थ में प्रयुक्त शब्द कौन सा है?

- a) शायराना      b) सिमटना      c) लपेटना      d) अर्ज करना

119. 'धुंध' शब्द का समानार्थी शब्द कौन सा है?

- a) सवाल      b) ढकना      c) दीमक      d) कोहरा

120. 'त्योहार' शब्द का समानार्थी शब्द कौन सा है?

- a) जशन      b) ढोल      c) थाप      d) अंचल